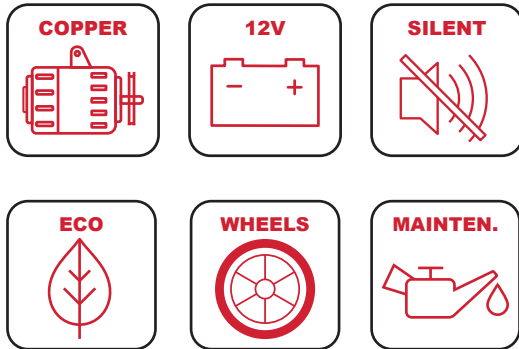




SC4000iE-O

GASOLINE GENERATOR



SPECIAL FEATURES

Inverter technology for clean power
THD≤3%

Economy system, electronic speed control function
Saves fuel cost

Low noisy (58dB)
Provide you a comfortable home and office environment

Alternator
99.9% Cooper wire alternator, Longer lifetime.

Engine:
EURO V OHV SV230
Engine recoil starter of engine adopts vertical net design increase air intake, makes sufficient burn to prolong lifetime

Unique design, easier to handle

SPECIFICATION

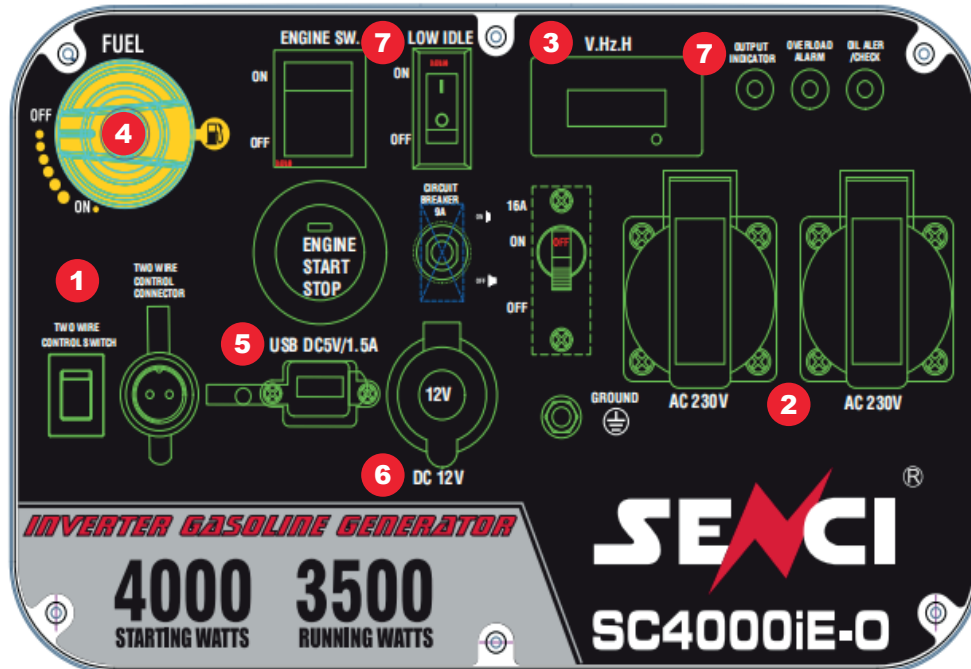
Frequency	50HZ
Voltage	230V
T.H.D	<3%
AC 230V Maximum	4000watt
AC 230V Rated	3800watt
Starting type	Recoil -Electric-Automatic by signal contac NA as solar system backup
Number phase	Single Phase
Power factor	1.0
Engine model	SV230
Displacement	223cc
Engine type	Gasolina 4 stroke OHV air cooling
Noise Level (@1/4 load, 7m)	58dB
Fuel tank capacity	10L
Run time (50%-100% load)	9.0-5.5h
Hourly consumption at 50% 100% loads	(1.1L/H, 9H) (1.8L/H, 5.5H)
Oil grade and capacity	SAE10w30
Insulation grade	H
Wheel kit	6"x2
Dimensions	660x560x650mm
Weight	51kg



SC4000iE-O

GASOLINE GENERATOR

CONTROL PANEL



1. Two Wire Control Connector & Switch | Automatic by signal contac NA as solar system backup
2. 2*16A Socket
3. Three in One Display (V, Hz, H)
4. One Botton Start And Stop
5. 5V DC Port
6. 12V DC Cigarette socket
7. Low Idle
8. Oil Alarm | Overload Alarm | Output Indicator